

Beetle

Care Sheet



Beetles are truly remarkable creatures, found in diverse habitats worldwide, including caves, forests, and deserts. Their strength is astonishing; for instance, a dung beetle can pull over 1,100 times its own weight! To create a thriving home for them, it's vital to replicate their natural environment by ensuring a cosy setting and providing a nutritious diet. Keep in mind that not all beetle species can coexist peacefully, so taking the time to research their specific needs will lead to a healthier, happier habitat. Let's celebrate the beauty and diversity of these incredible insects together!

Enclosure

When it comes to creating a perfect home for your beetle, choosing a safe and secure terrarium is essential! A sturdy, escape-proof enclosure is key to keeping your little friend happy and protected. Look for terrariums equipped with secure doors or lids—there are fantastic locks specifically designed for safety.

And let's not forget about ventilation! While it's essential to prevent escapes, ensuring adequate airflow is crucial for a healthy environment, helping to eliminate harmful bacteria and providing ample oxygen. Opt for a glass or plastic terrarium, and remember: the minimum size should be five times the length of your beetle, but bigger is always better! Your beetle will thrive in a spacious, well-ventilated home. Happy beetle-keeping!.

Get to know

Building a connection with your Beetle is an exciting journey! Understanding their signs of distress and health is key to ensuring they thrive. By discovering their likes and dislikes, you'll enhance your bond, making them feel right at home. When you first welcome your Beetle, allow them a few days to settle in and explore their new environment. As they become comfortable, gently introduce yourself by offering food in your hand. This will encourage them to crawl and start getting used to your touch, fostering a trusting and loving relationship. Enjoy the adventure of getting to know your new friend!

Temperature

To keep your beetles happy and healthy, it's essential to provide them with warmth. The best way to achieve this is by using a bulb that not only lights up but also emits heat! Positioning an overhead lamp outside the enclosure is a brilliant idea, as it prevents your beetles from accidentally climbing on it and getting burned. This setup mimics the sun, allowing your beetles to bask in the warmth and retreat to a cooler shaded area when they need to cool down. If your bulb isn't providing enough heat, adding a heat mat can be a great solution. To ensure optimal conditions, consider using a thermostat to monitor the temperature, and don't forget to check regularly with a thermometer to keep everything just right.

LIFESPAN

6months to 6
years depending
on species

SIZE

1mm to 19cm
depending on
species

TEMPERATURE

21 °C - 29 °C

HUMIDITY

60% - 70%

Less than 20% for
desert species

Environment

Substrate: Giving your beetle the perfect substrate is crucial for its happiness! Since most beetles thrive in humid environments, coco fibre is an excellent choice as it retains moisture beautifully. Plus, adding some rotting wood and leaf litter offers those essential nutrients. Don't forget to mist it daily to keep that substrate just right.

Décor: Decoration is a crucial aspect of a Beetle's enclosure. Décor such as cork bark, rocks, and foliage will make good enrichment opportunities for your animal. They will also keep your animal mentally stimulated, which is beneficial to their health, and provide them with a hiding spot to relax and feel safe.

Cleaning: Keeping your enclosure clean is crucial for the well-being of your Beetles. Be sure to spot clean any waste you see promptly. Additionally, remember to replace the substrates at least once a month and give everything a thorough clean with a safe disinfectant.



Diet

Feeding: A Beetle's diet plays a crucial role in their overall health and vitality! Fruit-eating beetles eat fresh fruits and sometimes nectar. To feed the beetles, you can offer banana, apple, orange, grape, pineapple or mango (among other fruits) on a dish. Just place this in the middle of the enclosure, preferably not directly under the light bulb. Make sure to clear out the fruit after 48 hours, as you'll start to get fruit flies if not. Always offer fresh food. You can also buy Beetle jelly food, which won't attract any fruit flies, but I would suggest mixing it with real fruit.

Water: Providing your Beetle with fresh water daily is crucial for their well-being! Use a shallow bowl to keep them safe and prevent any accidents. It's normal for them sometimes to use the water as a restroom, so be sure to change it regularly. A clean and cosy environment will help your little buddy thrive and lead a happy, vibrant life! Let's keep those Beetles smiling!

Beetles gender

Identifying whether a beetle is male or female can be exciting! Just take a look at the underside of the abdomen. Males often show lighter intersegmental membranes between their sternites, while females have them more closely spaced. Plus, if you're looking at stag beetles, the males usually sport larger, impressive mandibles and may be bigger overall. Happy beetle observing!



Beetles Gender



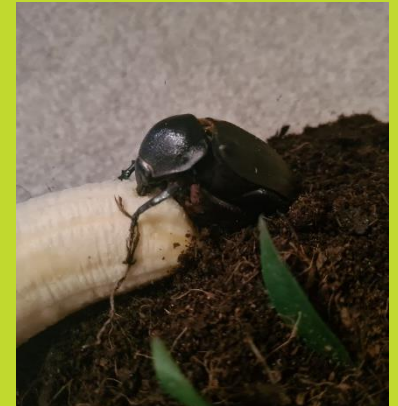
Health & Welfare

A vibrant, healthy beetle exhibits lively activity, reacts well to its surroundings, and happily engages in feeding behaviours typical for its species! Look for signs of well-being, like a shiny, intact exoskeleton and strong legs ready for climbing or exploring. When it's active at the correct times, you'll know it's thriving. On the other hand, a sluggish beetle with a dull or damaged shell, or one that isn't eating and moving much, may need some extra care.

Moulting

Beetles are truly fascinating creatures, especially with their unique growth process! Unlike many invertebrates, adult beetles don't moult; their moulting occurs during the larval stage. After they journey through their pupal phase and emerge as fully formed adults, their focus shifts to reproduction and foraging for food. It's remarkable how this final moult during the pupal stage signals their transformation into adults. If you happen to care for a beetle in its larval stage, it's crucial to allow it some peace and quiet during the moulting process. This period can be both stressful and energy-draining for them, and interruptions can lead to serious consequences. You might notice signs of moulting when a larva has a bulging head, seems inactive, or shows a split in its exoskeleton—often along the back. The colour might appear duller, revealing the new exoskeleton beneath, which gleams with a pale or white hue.

Taking the time to understand their life cycle not only enhances our appreciation for these amazing insects but also ensures we provide the best care possible!



Transport

When you travel with your animals, it's essential to prioritise their safety and comfort. Ensure their travel box has sufficient space for your Beetle to sit comfortably without being jostled around. If they're new to travelling, covering the box with a cloth to create a calming darkness can help ease their nerves. Remember to ensure the box is well-ventilated yet secure to prevent escape. Keeping your pet warm is crucial, so pack a battery heat pack or a hot water bottle to maintain a cosy environment.

Diseases and Concerns

Beetles are truly remarkable creatures! However, as with any pet, it's essential to be aware of some considerations when inviting one into your home. One aspect to keep in mind is allergies—especially if you have beetle larvae, as their bristles or shed skin can trigger reactions in some people without them realising it. It's always a good idea to monitor for any skin rashes or allergic responses.

Another point to consider is that some beetles, like blister beetles or bombardier beetles, can secrete toxins or have venomous stings. While these traits are fascinating, they can pose a risk to other pets if ingested or touched.

If you're thinking about adopting a beetle, take the time to learn about their health needs and daily care. Regularly checking on their well-being is essential! If you ever spot any issues, don't hesitate to reach out to an invertebrate specialist. With a bit of knowledge and love, your beetle can thrive and bring joy to your life!

Beetle

